

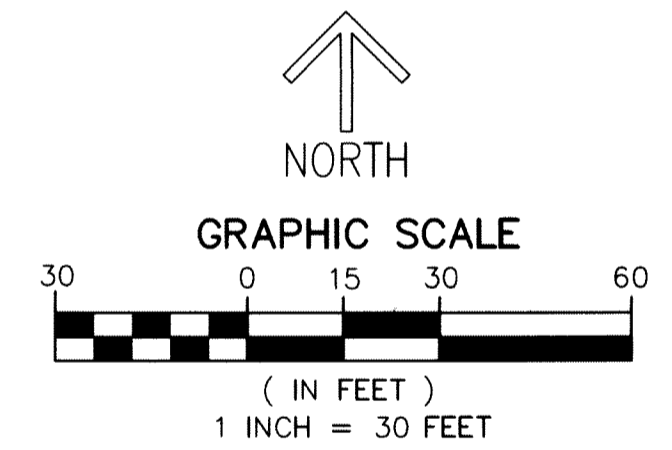
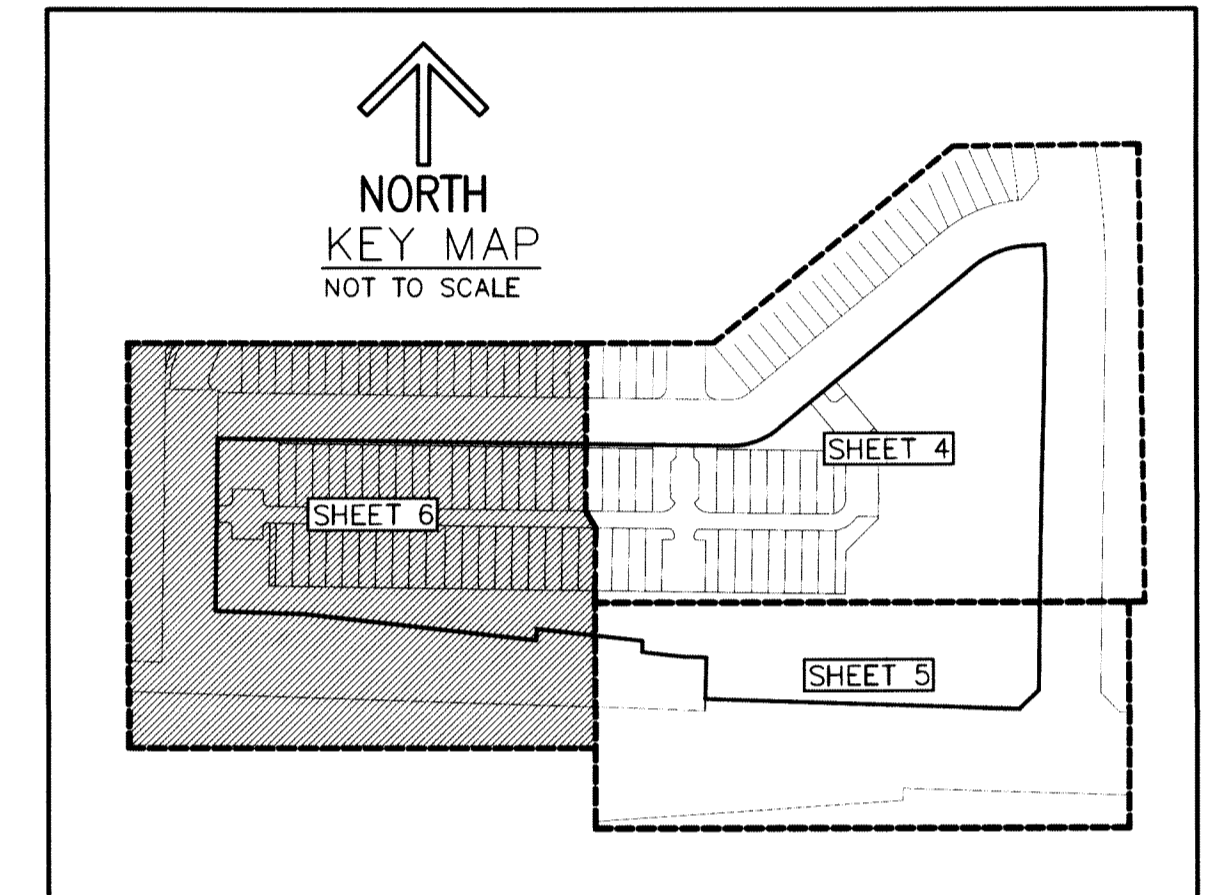
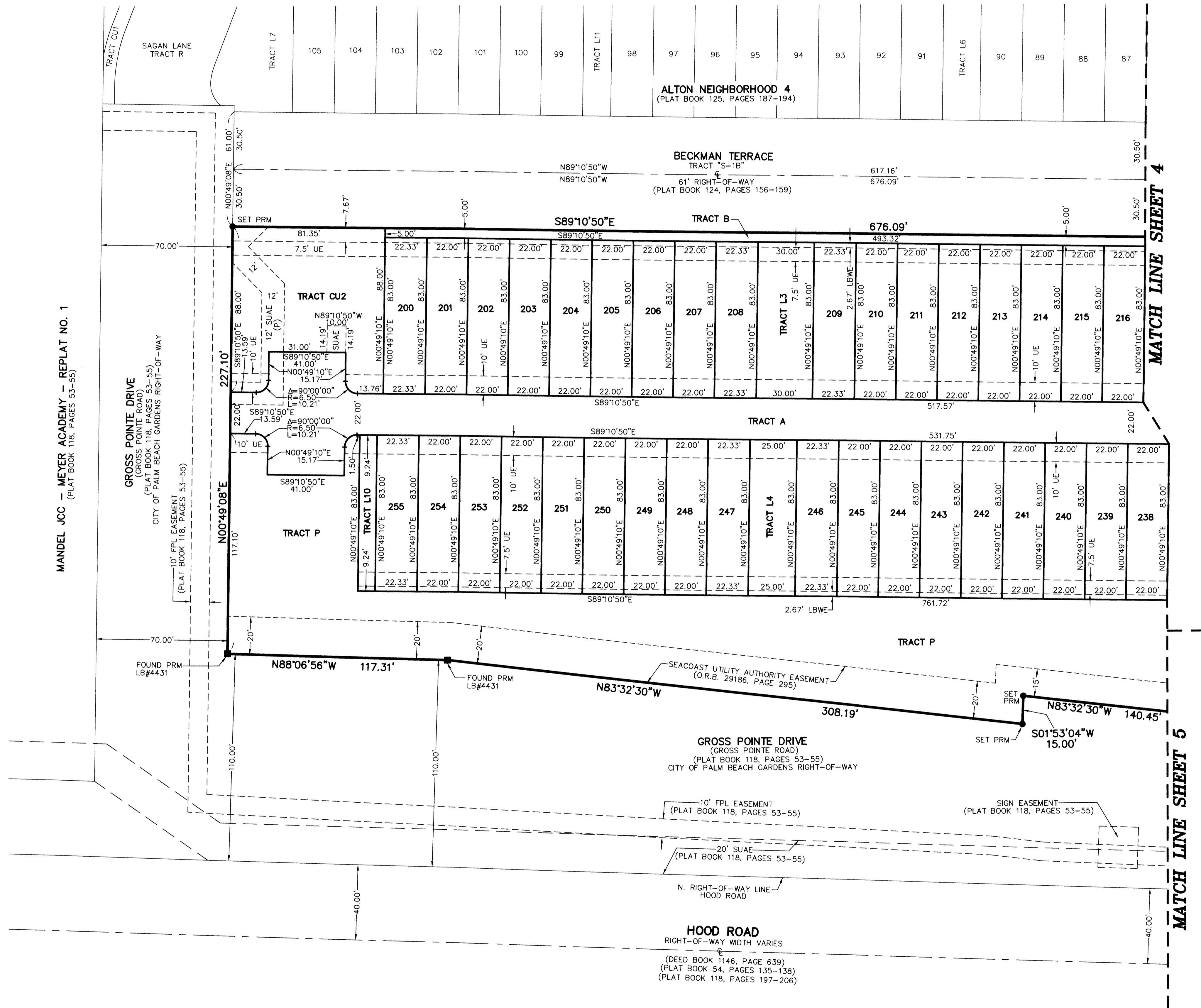
THIS INSTRUMENT PREPARED BY  
 DAVID P. LINDLEY  
 OF  
**CAULFIELD and WHEELER, INC.**  
 SURVEYORS - ENGINEERS - PLANNERS  
 7900 GLADES ROAD, SUITE 100  
 BOCA RATON, FLORIDA 33434 - (561)392-1991  
 CERTIFICATE OF AUTHORIZATION NO. LB3591  
 JANUARY - 2019

# ALTON NEIGHBORHOOD 4 PHASE 2

BEING A REPLAT OF TRACT "CP", ALTON PCD-TRACTS DEF, AS RECORDED IN PLAT BOOK 124, PAGES 156 THROUGH 159  
 OF THE PUBLIC RECORDS OF PALM BEACH COUNTY, FLORIDA, LYING IN SECTION 35, TOWNSHIP 41 SOUTH, RANGE 42 EAST,  
 CITY OF PALM BEACH GARDENS, PALM BEACH COUNTY, FLORIDA

65

SHEET 6 OF 6



- LEGEND/ABBREVIATIONS**
- CL - CENTERLINE
  - Δ - DELTA (CENTRAL ANGLE)
  - CB - CHORD BEARING
  - CD - CHORD DISTANCE
  - CU - COMMUNITY USE
  - L - ARC LENGTH
  - LB - LICENSED BUSINESS
  - LBWE - LANDSCAPE BUFFER WALL EASEMENT
  - O.R.B. - OFFICIAL RECORD BOOK
  - R - RADIUS
  - RBE - ROADWAY BUFFER EASEMENT
  - SUAE - SEACOAST UTILITY AUTHORITY EASEMENT
  - UE - UTILITY EASEMENT
  - WME - WATER MANAGEMENT EASEMENT
  - PRM - DENOTES PERMANENT REFERENCE MONUMENT  
 FOUND 4"x4" CONCRETE MONUMENT WITH DISK
  - FND PRM - DENOTES PERMANENT REFERENCE MONUMENT  
 FOUND 1/2" IRON ROD WITH ALUMINUM DISK  
 STAMPED "SCHORAH AND ASSOCIATES PRM LB#2438"
  - SET PRM - DENOTES PERMANENT REFERENCE MONUMENT  
 SET 5/8" IRON ROD WITH PLASTIC CAP STAMPED  
 C&W PRM LB#3591
  - (P) - DENOTES ALTON PCD-TRACTS DEF, AS RECORDED IN  
 PLAT BOOK 124, PAGES 156 THROUGH 159